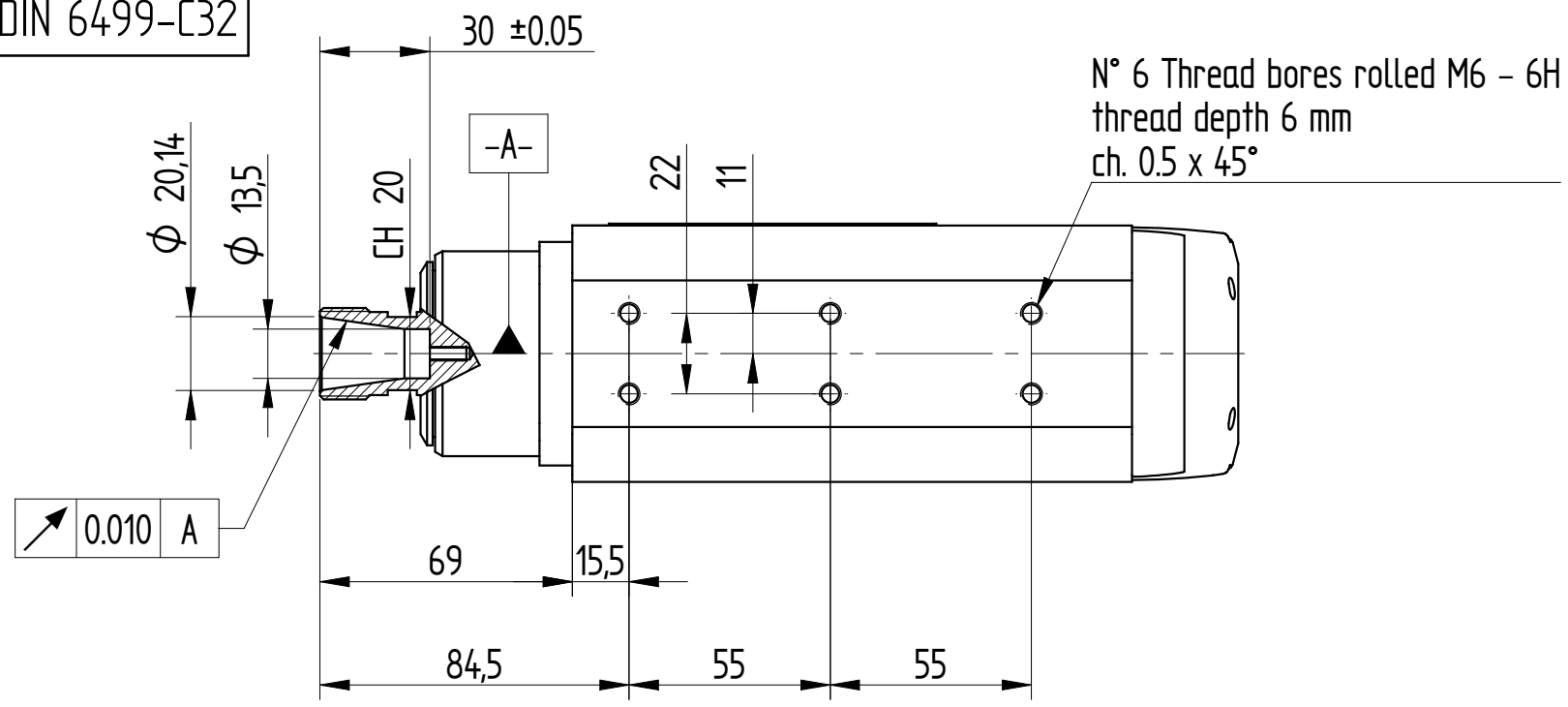
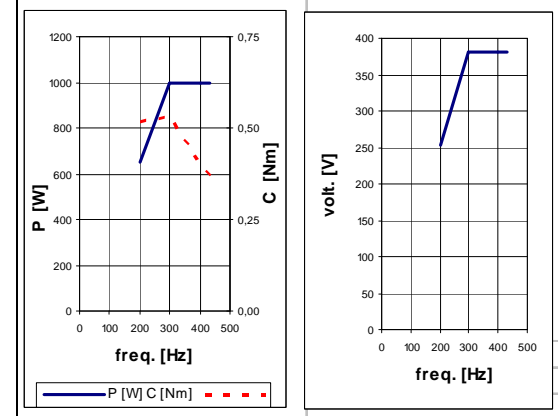


COLLET ER20  
DIN 6499-C32

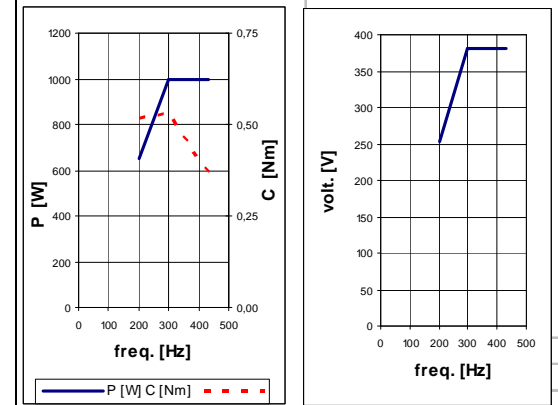


DATI MOTORE E CURVE CARATTERISTICHE / PERFORMANCES AND MOTOR RATINGS

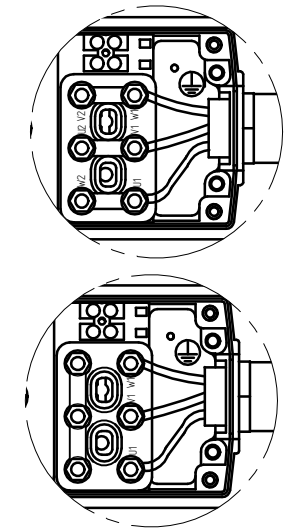
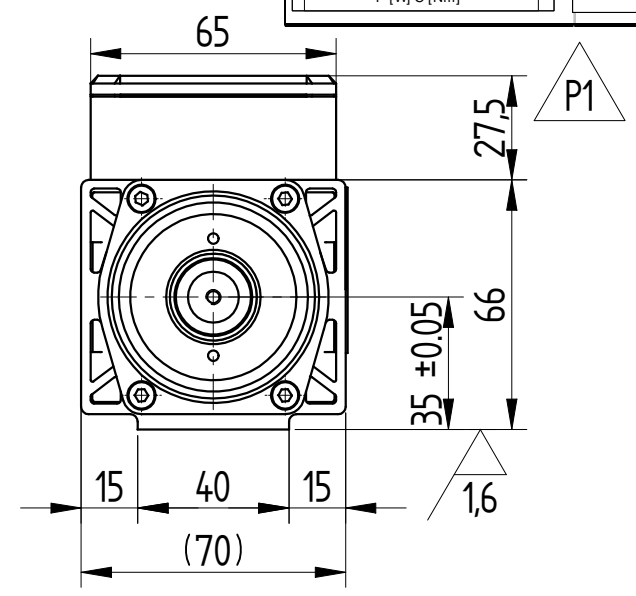
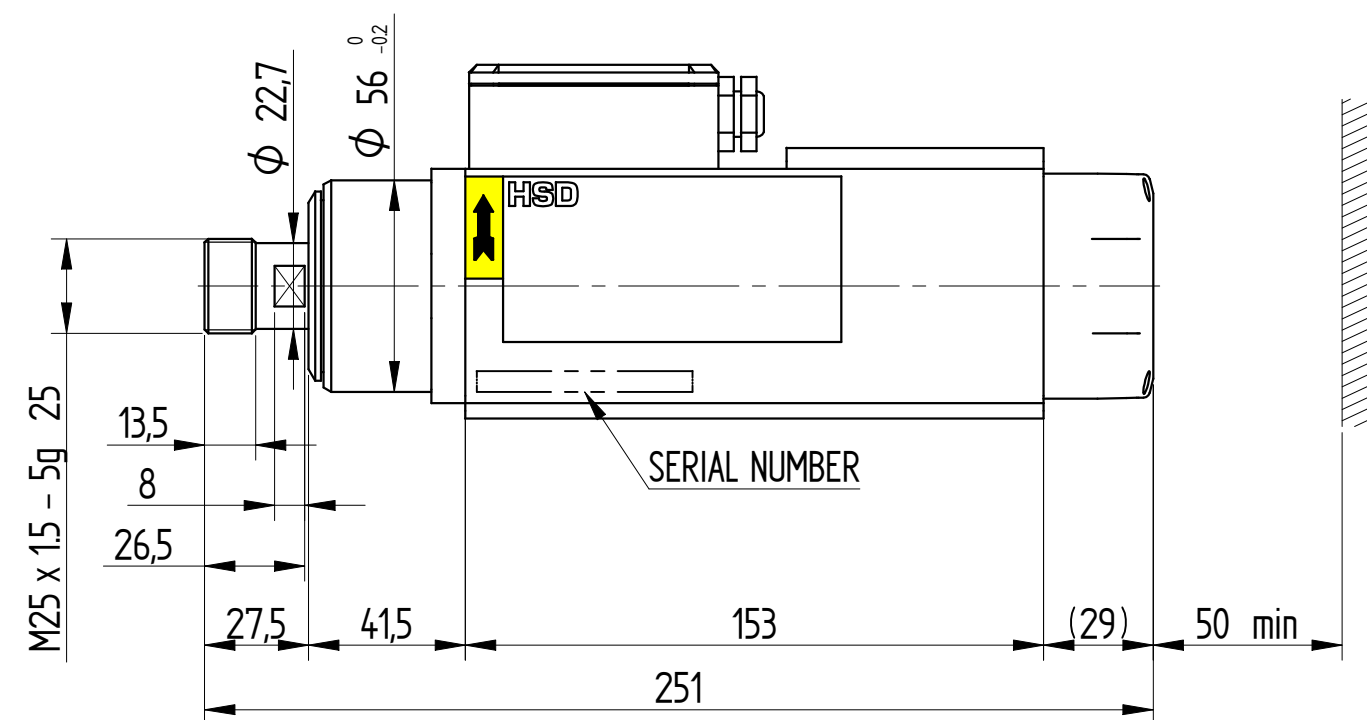


Tensione / Voltage	V ±10%	380	380	380
Potenza resa / Output Power	kW	1 (1,3)	1 (1,3)	1 (1,3)
Corrente nom. / Current	A	3,2 (4,2)	3,2 (4,2)	2,5 (3,3)
Frequenza / Frequency	Hz	300	400	433
rpm	rpm	18000	24000	26000
Coppia nom. / Torque	Nm	0,53 (0,69)	0,4(0,53)	0,37(0,48)
Cuscinetto Ant. / Front Bearing		cont.obliquo	cont.obliquo	cont.obliquo
Cuscinetto Post. / Post. Bearing		radiale	radiale	radiale
Rendimento / Efficiency	η		0,65	
Fattore di potenza / Power factor	cos φ		0,75	
Numero di poli / Poles			2	
Tipo di servizio / Service type			S1 (S6 40%)	
Classe di isolam. / Insulation class			F	
Raffreddamento / Cooling			Aria forzata	
Peso / Weight	Kg		3,5	
Grado IP / Type of Protection	IP		50	

DATI MOTORE E CURVE CARATTERISTICHE / PERFORMANCES AND MOTOR RATINGS

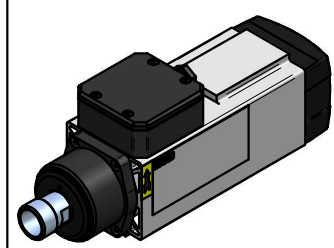


Tensione / Voltage	V ±10%	220	220	220
Potenza resa / Output Power	kW	1 (1,3)	1 (1,3)	1 (1,3)
Corrente nom. / Current	A	5,5 (7,2)	5,5 (7,2)	4,3 (5,6)
Frequenza / Frequency	Hz	300	400	433
rpm	rpm	18000	24000	26000
Coppia nom. / Torque	Nm	0,53 (0,69)	0,4 (0,53)	0,37 (0,48)
Cuscinetto Ant. / Front Bearing		cont.obliquo	cont.obliquo	cont.obliquo
Cuscinetto Post. / Post. Bearing		radiale	radiale	radiale
Rendimento / Efficiency	η		0,65	
Fattore di potenza / Power factor	cos φ		0,75	
Numero di poli / Poles			2	
Tipo di servizio / Service type			S1 (S6 40%)	
Classe di isolam. / Insulation class			F	
Raffreddamento / Cooling			Aria forzata	
Peso / Weight	Kg		3,5	
Grado IP / Type of Protection	IP		50	



Electric connection:  
Delta 220V 467-600Hz

Electric connection:  
Star 380V 467-600Hz



15

RIPRODUZIONE E/O DIFFUSIONE VIETATA REPRODUCTION AND OR DISCLOSURE OF THE DRAWING IS FORBIDDEN	P1	General update			30/09/11	1:1			
	REV.	DESCRIZIONE REVISIONE / REVISION DESCRIPTION			DATA / DATE	FIRMA SIGN			
	DATA DATE	31/08/2011	31/08/2011		SCALA : SCALE :	1:2		QUOTE SENZA INDICAZIONE DI TOLLERANZA POSITIONS WITHOUT TOLERANCE INFORMATION - LAVORAZIONI MECCANICHE : - MECHANICAL WORKINGS : UNI EN 22768-FH - SALDOCARPENTERIE : - WELDMENT: - GETTI : - MELT CASTING :	
	FIRMA SIGN	L.Loffredo	A.Pietro Paolo		PESO : WEIGHT :	4,426 kg			
	MATERIALE : MATERIAL :				GREZZO DI : RAW :				
	TRATTAMENTO TERMICO : HEAT TREATMENT :				SOSTITUISCE : REPLACE :				
	RIVESTIMENTO SUPERFICIALE : SURFACE TREATMENT :				CICLO DI VERNICIATURA : PAINTING CYCLE :			REVISIONE REVISION	P1
	DENOMINAZIONE : DESCRIPTION :	MT1055-090-ER20-380/220V-DX-18/26000-1KW-S1						CODICE ARTICOLO DRAW N°	6162H0088